

# UltraLink



## KVM access over IP

High-quality video up to 1280 x 1024 @ 75Hz

Very easy to install and operate

Secure encrypted operation

Scaling, scrolling, and auto-size features

Quad screen, real-time viewing of 4 computers

Compatible with most KVM switches

Available in single, dual, and quad models

## Features and Benefits

- Available in single, dual, and quad models
- Local KVM port for configuring the UltraLink and direct local access to the computer or KVM switch
- Connect to a remote computer, server, or KVM switch directly or over a network IP
- Remote or Local BIOS-level access control
- Resolution up to 1280 x 1024 @ 75Hz
- Solid-state embedded unit for maximum reliability
- Compatible with all Rose Electronics KVM products and most other KVM devices
- Easy to install and configure
- Scaling of computer images reduces the amount of data sent and permits fast screen updates over slow links (Modes: scaled, scrolled, or full-screen)
- Quad screen mode allows you to view four servers from one screen
- Password security prevents unauthorized configuration and access
- User ID and password required for remote access
- Remote client application is simple to install, use, and requires no licensing
- Front panel shows power and current connected input port (Network, serial, or local KVM)
- Flash memory technology allows for fast and reliability upgrades
- Free firmware upgrades for product enhancements and new Software features available at [www.rose.com](http://www.rose.com)
- Made in USA

## The UltraLink™ Advantage . . .

UltraLink sets a new standard for the remote management of server room environments. It allows you to access your computers and servers locally or across your network. Connect the unit to a Rose Electronics KVM switch and you now have access to as many as 1,000 computers or servers.

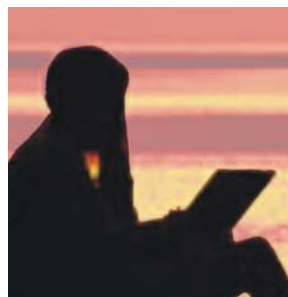
The UltraLink is easy to install and configure. Connect the unit, assign an IP address, install the remote viewer software, and it's ready to use.

The sophisticated scaling feature allows you to position any size image of your server's video anywhere on your screen. With this feature, you can monitor servers while working on other tasks in another window.

Network workstations can connect to multiple UltraLinks and display each connection in a separate viewer window.

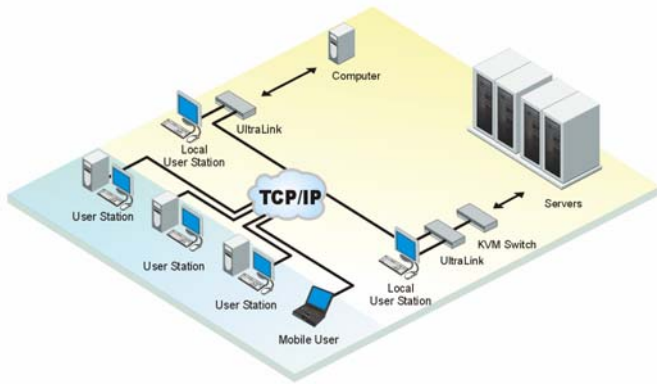
The dual and quad models contain two or four completely independent units in a rack mountable chassis. Typically, the dual and quad models are connected to a KVM switch. This provides multiple users remote access to the servers.

The remote client viewer program is designed to simplify accessing the remote computers. Click on the connect icon, login, and you will see a crisp, clear, high-quality image of the remote computer.



Maintain your systems from  
anywhere in the world

## Typical Application



**Introduction** The UltraLink is a versatile and powerful product that extends the range of access to your computers and servers to anywhere in the world. Its advanced design makes it compatible with most KVM switches and computers.

**Installation** The UltraLink is very easy to install and configure. Just connect the unit to your network, a local KVM station, and a computer or KVM switch. Next, assign an IP address to the unit and you're done. Next, run the remote client viewer program on a network workstation. Enter the UltraLink's assigned IP address and other configuration parameters, save it, and the workstation is ready to access the UltraLink.

**Operation** All access to the UltraLink is through the remote client viewer. Drop-down menus provide a selection list of multiple UltraLink locations that can be connected to. Once connected, you will see the computer's video and have complete control over that computer.

**Viewer windowing** The remote client viewer can be adjusted to any size. This feature allows you to place a scaled viewer's image in the corner of your screen and monitor a server while working on other tasks in another window or multiple viewer windows to monitor multiple remote locations.

**Security** The UltraLink is designed with the highest regard for security. Remote access requires a user ID and password. All transmissions to and from the viewer and UltraLink are encrypted with the latest SSL technology. Login, time-out, and lock out for repeated attempts to enter the password, add to the security of the system.

**Quad screen mode** With the UltraLink connected to a KVM switch, you can view four servers at one time. The four connected servers are viewed in real time and are automatically scaled to fit their assigned quadrant in the viewer screen.

**Color modes and resolution** Full 16-bit color video is supported. You can view the video in black and white, gray scale, color, or use progressive color rendering.

**Mouse cursor** The UltraLink uses a one-mouse cursor system in a very intuitive style to access the remote connection or an application on your desktop.

**Video resolution** Unlike other products, the UltraLink automatically adjusts to the connected computers video. It supports a video resolution up to 1280 x 1024 which allows you to access the standard Sun computers resolutions.

**Flash memory** To support the latest devices and provide continuing features and support, UltraLink contains flash memory. We provide free lifetime firmware upgrades from our web site at [www.rose.com](http://www.rose.com).

### Part Numbers

UL-V3	Single access unit
UL-DV3	Dual access unit
UL-QV3	Quad access unit
RM-UBnn	Rack mount kit for UL-V3, UL-DV3
RM-UCnn	Rack mount kit for UL-QV3 (nn = 19", 23", or 24")
CAB-CXVSM005	5' UltraLink to KVM switch cable (provided)
CAB-CX0606C005	5' UltraLink to CPU cable (provided)
CAB-CXVMM1	Video loop cable (provided with UL-V3 model)

### Specifications

Dimensions	Model	Width	Depth	Height	Weight
	UL-V3	16.7	9.70	1.75	in 8.00 lbs
		42.4	24.6	4.40	cm 3.60 kg
	UL-DV3	16.7	9.70	1.75	in 9.00 lbs
		42.4	24.6	4.40	cm 4.10 kg
	UL-QV3	16.7	9.70	3.50	in 11.0 lbs
		42.4	24.6	8.90	cm 5.00 kg

Power	Auto Switching, 90 - 240 VAC, 130 watts
Connectors	Power: IEC 320 standard receptacle Local KVM: Video - HD15F Keyboard - MD6F Mouse - MD6F Switch or computer : DB25F Ethernet port: RJ45 Serial port: DB9M
Video bandwidth	150Mhz
Chassis	Electro galvanized steel, black powder coated (top cover)
Controls	Power On / Off Switch
Indicators	LEDs: Power, Net, Serial, Local, Ethernet link, 10/100MB Ethernet speed
Environmental	0° - 45°C / 32° - 113°F, 5 - 80% non-cond. RH
Approvals	FCC, UL, cUL, TUV, CE, VCCI



Rear view - UL-V3 / UL-DV3 / UL-QV3

Rose Electronics 10707 Stancliff Road, Houston, Texas 77099 USA  
281-933-7673 800-333-9343 (USA) +44 (0) 1264 850574 (Europe) +65 6324 2322 (Asia Pacific)